

Skybolt ALoc® Series Fasteners

Airloc® Replacement TSO-C148



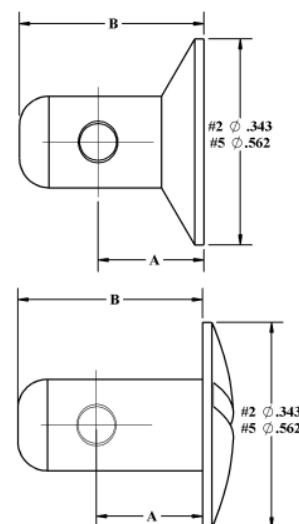
ALoc® Fasteners are common on Beechcraft® airplanes and latches on many cowlings. The design consists of a simple stud with a pin pressed in the shank. The pin must be installed after the stud is installed and removed prior to removing the stud. Some panel applications for #2, #5, and #7 studs may use a wear grommet. Unlike a ZLoc® Fastener, this grommet probably does not require replacement when replacing studs. ALoc® Fasteners are made in various stud blank lengths and this length is indicated by the 1st Dash#. Each length can have up to 10 2nd Dash#, or grip sizes. The 2nd Dash# indicates the maximum grip range in .010 increments. Note that the ALoc® design has the least grip range of all 1/4 turn fasteners. Skybolt primarily stocks certain sizes in Stainless Steel for replacement purposes only. See Conversion Kits for STC Aloc to CLoc (Camloc style) conversions.

ALoc® Studs

Series	Flush Steel Hd#	Round Steel Hd#	Head Dia	Steel Pin#	Cloc® Conversion
1	294426	294422	1/4	294424	
2	98264	98293	11/32	99785-2	2000 Series
5	98265	98292	9/16	99836	4000 Series
7	98266	98291	11/16	99799	

Common Stainless Steel Part Numbers

Airloc Steel Part#	Skybolt Aloc Stainles Part#	Type	Grip	'A'	Length
98264-2-090	SK112060-1-090	#2 Flush	.081-.090	.230	.359
98293-1-060	SK98293-1-060SS	#2 Round	.051-.060	.200	.359
98265-1-070	SK294186-1-070	#5 Flush	.061-.070	.257	.500
98265-1-080	SK294186-1-080	#5 Flush	.071-.080	.267	.500
98265-1-100	SK294186-1-100	#5 Flush	.091-.100	.287	.500
98265-2-180	SK294186-2-180	#5 Flush	.171-.180	.367	.609
98265-2-190	SK294186-2-190	#5 Flush	.181-.190	.377	.609
98265-2-200	SK294186-2-200	#5 Flush	.191-.200	.387	.609
98265-2-210	SK294186-2-210	#5 Flush	.201-.210	.397	.609
98265-2-230	SK294186-2-230	#5 Flush	.220-.230	.417	.609
98265-2-240	SK294186-2-240	#5 Flush	.231-.240	.427	.609
98265-2-250	SK294186-2-250	#5 Flush	.241-.250	.437	.609
98292-1-080	SK294290-1-080	#5 Round	.071-.080	.267	.500
98292-1-090	SK294290-1-090	#5 Round	.081-.090	.277	.500
98292-2-170	SK294290-2-170	#5 Round	.161-.170	.357	.609
98292-2-250	294290-2-250	#5 Round	.241-.250	.437	.609



*Does not include Pin. Wing studs are available in all sizes.

ALoc® Grommets

(May not require replacement when replacing studs)

Series	Panel Thickness	Flush Hd#	Curling Tools	Round Hd#	Curling Tools
1	None				
2	Up to .040	295846-1	29693/29695	98013	29693/29694 See Tools P49
	.041-.080	295846-2		295902	
5	.040-.121	295250-1	9529/29667	99874-1	9529/29770 See Tools P49
	.122-.201	295250-2		99874-2	
7	Up to .040	295900-1	9543/29689	295899-1	29674/29685 See Tools P49
	.041-.121	295900-2		295899-2	

ALoc® Receptacles

Series	Solid Receptacle		Plain		Rivet	Rivet Spacing
	Plain	Csk	Floating Rec	Csk		
1	294420-P067	294420-C067			1/16	1/2
	294420-P098				3/32	1/2
2	99871-P098	98871-C098		99967-C098	3/32	3/4
5	99833-P098	99833-C098	99947-P098	99947-C098	3/32	1.0
	99833-P130	99833-C130	99947-P130	99947-C130	1/8	1.0
7	99797-P098	99797-C098			3/32	1-3/8
	99797-P130	99948-P130	99948-P130	99948-C130	1/8	1-3/8