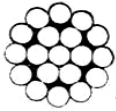


# CONTROL CABLE

**1x19** NON-FLEXIBLE AIRCRAFT CABLE- Made to specifications MIL-C-69040 (galvanized and MIL-C-5693 ( stainless). 1x19 cable has one strand of nineteen wires. It has more metallic area than 7x7 or 7x19 cable which makes it stronger but least flexible. 1x19 cable is generally used for bracing purposes.

**7x7** FLEXIBLE AIRCRAFT CABLE- Made to specification MIL-W-83420\* (galvanized and stainless). 7x7 cable has seven strands of seven wires each. It is used for control purposes where extreme flexibility is not required but abrasion is a factor.

**7x19** FLEXIBLE AIRCRAFT CABLE- Made to specifications MIL-W-83420\* ( galvanized and stainless 7x19 cable has seven strands of nineteen wires each. Its great metallic area makes it stronger than 7x7 cable. Because of its fine wires, the best service is obtained where abrasion is not too severe. The 7x19 cable is the most flexible to meet severe bending requirements.



**1x19**



**7x7**



**7x19**

Cable Dia	Breaking Strength	
	Galvanized	Stainless
	1/16	500lbs
3/32	1200	1200
1/8	2100	2100
5/32	3300	3300
3/16	4700	4700

Cable Dia	Breaking Strength	
	Galvanized	Stainless
	1/16	480lbs
3/32	920	920
1/8	1700	1700
5/32	2600	2600
3/16	3700	3700

Cable Dia	Breaking Strength	
	Galvanized	Stainless
	1/16	
3/32	920lbs	920lbs
1/8	2000	1760
5/32	2800	2400
3/16	4200	3700

\*MIL-W-83420 replaces MIL-W-1511 and MIL-w-5424B. Note: Aircraft and commercial cable differ. Aircraft cable utilizes special lubricants for better fatigue life. **SKYBOLT** will only provide certified aircraft cable meeting military specifications.

## NICOPRESS OVAL SLEEVES

Copper, Zinc plated Copper, and Tin plated Copper (specifically designed for stainless cable)

Copper	Zinc Copper	Tin Copper	Cable Dia
18-1-C	28-1-C	428-2-VC	1/16
18-2-G	28-2-G	428-3-VG	3/32
18-3-M	28-3-M	428-4-VM	1/8
18-4-P	28-4-P	428-5-VP	5/32
18-6-X	28-6-X	428-6-VX	3/16
18-10-F6	28-10-F6	428-8-VF6	1/4

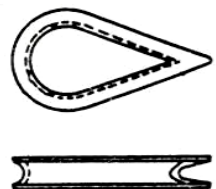


## AN100-Thimble

Carbon Steel- Cadmium plated per QQ-P-416

CRES. Replace dash(-) with C to denote CRES.

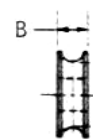
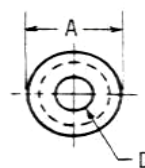
AN100	Cable Dia
-3	1/16, 5/64
-4	3/32, 7/64, 1/8
-5	5/32
-6	3/16
-7	7/32
-8	1/4
-10	5/16



## AN111- CABLE BUSHING. Low Carbon Steel - Cadmium Plated per QQ-P-421. CRES.

Replace dash with C for CRES.

AN111	Cable Size	A	B	D
-3	1/16, 5/64, 3/32	.437	.156	.187
-4	1/8	.468	.187	.187
-5	5/32	.562	.218	.250
-6	3/16	.687	.250	.312
-7	7/32	.875	.270	.375
-8	1/4	1.000	.312	.375
-10	5/16	1.312	.375	.437
-12	3/8	1.500	.437	.500



## SA361 EYE END STRAP. CRES

## SA362 FORK END STRAP. CRES.

SA361	Wire Rope Diameter	Pin Hole Diameter	L	SA361 A	SA362 A
-2	1/16	.188	1.0625	.088	.093
-3	3/32	.188	1.5000	.103	.108
-4	1/8	.188	1.6250	.190	.195

