

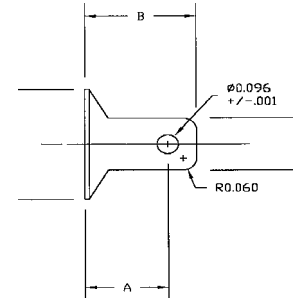
Aloc® Series Fasteners



Aloc® Fasteners are common on Beechcraft airplanes and latches on many cowlings. The design consists of a simple stud with a pin pressed in the shank. The pin must be installed after the stud is installed and removed prior to removing the stud. Some panel applications for #2, #5, and #7 studs may use a wear grommet. Unlike a ZLoc® Fastener, this grommet probably does not require replacement when replacing studs. Aloc® Fasteners are made in various stud blank lengths and this length is indicated by the 1st Dash#. Each length can have up to 10 2nd Dash#, or grip sizes. The 2nd Dash# indicates the maximum grip range in .010 increments. Note that the Aloc® design has the least grip range of all 1/4 turn fasteners. Skybolt primarily stocks certain sizes in Stainless Steel for replacement purposes only. Pin Installation Tools are expensive and hard to obtain. To remove an Aloc® Stud, clip or die grind the pin enough to remove. Modify a standard pair of Vise Grip Pliers with a die grinder by grinding a slot in one jaw to provide relief when the pin is pressed through the stud.

Aloc® Studs

Series	Flush Hd#	Round Hd#	Head Dia	Steel Pin#
1	294426	294422	1/4	294424
2	98264	98293	11/32	99785-2
5	98265	98292	9/16	99836
7	98266	98291	11/16	99799



Common Stainless Steel Part Numbers

OEM Part#	Aloc® Part#	Type	Grip	'A'	Length
98264-2-090SS	SK112060-1-090	#2 Flush	.081-.090	.230	.359
98293-1-060SS	SK98293-1-060SS	#2 Round	.051-.060	.200	.359
98265-1-070SS	SK294186-1-070	#5 Flush	.061-.070	.257	.500
98265-1-080SS	SK294186-1-080	#5 Flush	.071-.080	.267	.500
98265-1-100SS	SK294186-1-100	#5 Flush	.091-.100	.287	.500
98265-2-180SS	SK294186-2-180	#5 Flush	.171-.180	.367	.609
98265-2-190SS	SK294186-2-190	#5 Flush	.181-.190	.377	.609
98265-2-200SS	SK294186-2-200	#5 Flush	.191-.200	.387	.609
98265-2-210SS	SK294186-2-210	#5 Flush	.201-.210	.397	.609
98265-2-230SS	SK294186-2-230	#5 Flush	.220-.230	.417	.609
98265-2-240SS	SK294186-2-240	#5 Flush	.231-.240	.427	.609
98265-2-250SS	SK294186-2-250	#5 Flush	.241-.250	.437	.609
98292-1-080SS	SK294290-1-080	#5 Round	.071-.080	.267	.500
98292-1-090SS	SK294290-1-090	#5 Round	.081-.090	.277	.500
98292-2-170SS	SK294290-2-170	#5 Round	.161-.170	.357	.609
98292-2-250SS	294290-2-250	#5 Round	.241-.250	.437	.609

*Does not include Pin.

Aloc® Grommets

(May not require replacement when replacing studs)

Series	Panel Thickness	Flush Hd#	Curling Tools	Round Hd#	Curling Tools
1	None				
2	Up to .040	295846-1	29693/29695	98013	29693/29694
	.041-.080	295846-2		295902	
5	.040-.121	295250-1	9529/29667	99874-1	9529/29770
	.122-.201	295250-2		99874-2	
7	Up to .040	295900-1	9543/29689	295899-1	29674/29685
	.041-.121	295900-2		295899-2	

Aloc® Receptacles

Series	Solid Receptacle		Plain Floating Rec	
	Plain	Csk	Csk	Csk
1	294420-P067	294420-C067		
	294420-P098			
2	99871-P098	98871-C098		99967-C098
5	99833-P098	99833-C098	99947-P098	99947-C098
	99833-P130	99833-C130	99947-P130	99947-C130
7	99797-P098	99797-C098		
	99797-P130	99948-P130	99948-P130	99948-C130