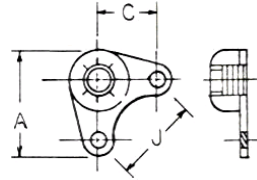


PLATENUTS

MS21081 CORNER PLATENUT (NYLON INSERT) 250 Deg F

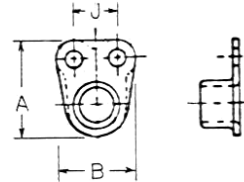
Dash#	NAS		Thread	A		J
	1027N	22NA5		Max	Min	
-06	06	-62	#6-32	.703	.344	.486
-08	08	-82	#8-32	.703	.344	.486
-3	3	-02	#10-32	.703	.344	.486
-4	4	-048	1/4-28	.906	.500	.486
-5	5	-054	5/16-24	.937	.500	.707
-6	6	-064	3/8-24	1.008	.500	.707



MS21082 Same as MS21080 except with Floating Nut 250 Deg F
 Supersedes NAS1032N

MS21086 SIDE BY SIDE RIVET SPACED PLATENUT (ALL METAL) 450 Deg F

Dash#	NAS	Thread	A		B		J
			Max	Min	Max	Min	
L08	-08	#8-32	.486	.235	.297	.219	
L3	-3	#10-32	.521	.298	.328	.219	
L4	-4	1/4-28	.591	.380	.414	.219	
L5	-5	5/16-24	.747	.475	.505	.269	
L6	-6	3/8-24	.856	.580	.614	.269	



MS21087 Same as MS21086 except: Stainless 450F or 800F with Silver Plating
 Supersedes NAS1067

AN Notes: No letter - Denotes Aluminum plate. F - Denotes Steel Plate.
 MS Notes: No letter - Non Dry Film Lubricant, Plain holes. L - Dry Film Lubricant. K - Countersunk or Dimpled holes. W - Welding projection. All MS Platenuts meet MIL-N-25027 Specifications, 125 KSI except MS20501 which meets MIL-N-7873 Specifications, 125 KSI.
 NAS Notes: No letter - Cadmium Plated with Dry Film Lubricant.
 Sample Manufacturer's Part Numbers: ESNA - F22NA1. Kaynar - K3000. SPS - NS103185S. Republic - BR3100A. Voi-Shan - VN111D1. Cherry or Boots - T8121S.

HINGES

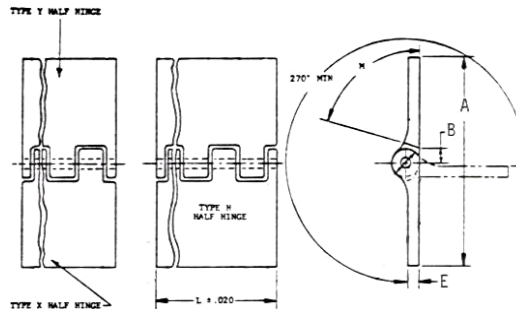
Sold as Standard 72" Lengths Only.

MS20001 Supersedes AN252 - EXTRUDED HINGE, STRUCTURAL

Aluminum Alloy - 2024-T3511 per QQ-A-200/3, Anodized.
 Aluminum Alloy - 7075-T73511 per QQ-A-200/11, Anodized.
 Denote 7075 Aluminum by adding 'A' to part number.
 'P' denotes anodized finish. Denote 'L' after dash# in inches and hundreds. EX: MS20001P4-12.00 denotes 2024 Alum., Anodized, 12" long. Part numbers listed are interchangeable.

MS20001	AN252	A ref		E		B	Pin Dash#
		Width Open	Max	Min	Max		
P2	-2	1.062	.056	.044	.135	2	
P3	-3	1.250	.056	.044	.135	2	
P4	-4	1.500	.056	.044	.135	2	
P5	-5	1.750	.056	.044	.135	2	
P6	-6	2.000	.056	.044	.135	2	

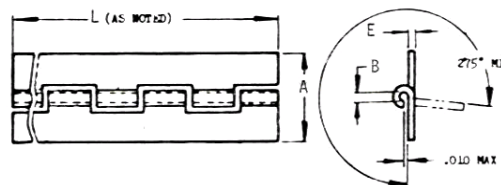
Note: Hinges may be special order only



MS20257 - CONTINUOUS HINGE

Aluminum Alloy - 5052 H24 or H34 per QQ-P-A-250/8, Anodized. CRES. 'P' denotes anodized aluminum.
 'C' denotes CRES.

MS20257	A ref		E		B		Pin* Dash#
	Width Open	Alum	CRES	Alum	CRES	Alum	
P1	.750	.032	.031	.169	.166	1	
P2	1.062	.040	.037	.220	.211	2	
P3	1.250	.040	.050	.220	.278	2	
P4	1.500	.040	.062	.220	.314	2	
P5	2.000	.051	.062	.253	.376	2	
P6	2.000	.064	.062	.382	.376	4	



*For Aluminum Hinge Only

MS20253 - STAINLESS HINGE PIN

MS20253	Dia	For Use With:		
		MS20001	MS20257P	MS20257C
-1	.062		1	1
-2	.089	1,2,3,4,5,6	2,3,4,5	2
-3	.117			3,4
-4	.179		4	5,6