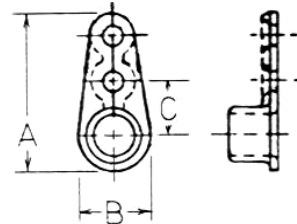


PLATENUTS

MS21071 ONE LUG - MINIATURE (ALL METAL) 450 Deg F

Add K to Dash# to denote Dimpled rivet and center holes.

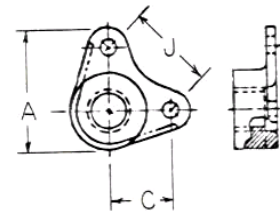
| Dash# | NAS | | | A | B | B | C |
|-------|-----|--------|---------|------|------|------|------|
| | 696 | MK2000 | Thread | Max | Min | Max | |
| L02 | 02 | -02 | #2-56 | .507 | .140 | .162 | .125 |
| L04 | 04 | -04 | #4-40 | .667 | .140 | .260 | .203 |
| L06 | 06 | -06 | #6-32 | .684 | .195 | .265 | .218 |
| L08 | 08 | -08 | #8-32 | .716 | .235 | .297 | .234 |
| L3 | 3 | -3 | #10-32 | .745 | .298 | .328 | .250 |
| L4 | 4 | -4 | 1/4-28 | .822 | .380 | .414 | .281 |
| L5 | 5 | -5 | 5/16-24 | 1.06 | .475 | .505 | .359 |
| L6 | 6 | -6 | 3/8-24 | 1.39 | .580 | .614 | .414 |



MS21072 Same as MS21071 except: Stainless 450F or 800F with Silver Plating
Supercedes NAS696

MS21073 CORNER PLATENUT - MINIATURE

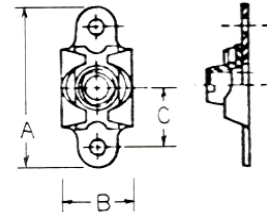
| Dash# | NAS | | A | C | J |
|-------|-----|---------|------|------|------|
| | 698 | Thread | Max | | |
| L02 | -02 | #2-56 | .288 | .125 | .177 |
| L04 | -04 | #4-40 | .448 | .203 | .287 |
| L06 | -06 | #6-32 | .463 | .218 | .308 |
| L08 | -08 | #8-32 | .497 | .234 | .331 |
| L3 | -3 | #10-32 | .526 | .250 | .354 |
| L4 | -4 | 1/4-28 | .603 | .281 | .398 |
| L5 | -5 | 5/16-24 | .757 | .359 | .508 |
| L6 | -6 | 3/8-24 | .870 | .414 | .585 |



MS21074 Same as MS21073 except: Stainless 450F or 800F with Silver Plating
Supercedes NAS698

MS21075 TWO LUG FLOATING - MINIATURE

| Dash# | NAS | | | A | B | B | C |
|-------|------|--------|---------|-------|------|------|------|
| | 1068 | MF5000 | Thread | Max | Min | Max | |
| L04 | -04 | -04 | #4-40 | .651 | .275 | .315 | .203 |
| L06 | -06 | -06 | #6-32 | .682 | .290 | .357 | .218 |
| L08 | -08 | -08 | #8-32 | .707 | .290 | .367 | .234 |
| L3 | -3 | -3 | #10-32 | .739 | .290 | .416 | .250 |
| L4 | -4 | -4 | 1/4-28 | .801 | .350 | .500 | .281 |
| L5 | -5 | -5 | 5/16-24 | 1.010 | .412 | .581 | .359 |



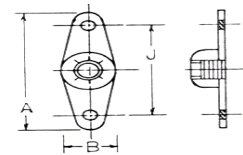
MS21076 Same as MS21075 except: Stainless 450F or 800F with Silver Plating
Supercedes NAS1068

MS21077 Same as MS21075 except: Stainless 450F or 800F with Silver Plating
Supercedes NAS1031D and NAS1031N

MS21078 TWO LUG PLATENUT (NYLON INSERT)

| Dash# | NAS | | | | A | B | B | J |
|-------|-------|-------|--------|---------|-------|------|------|-------|
| | AN366 | 1023N | F22NA1 | Thread | Max | Min | Max | |
| -04 | -04 | -04 | #4-40 | | .984 | .375 | .406 | .688 |
| -06 | F632 | -06 | -06 | #6-32 | .984 | .375 | .406 | .688 |
| -08 | F832 | -08 | -08 | #8-32 | .984 | .375 | .406 | .688 |
| -3 | F1032 | -3 | -3 | #10-32 | .984 | .375 | .406 | .688 |
| -4 | F428 | -4 | -4 | 1/4-28 | 1.296 | .484 | .516 | 1.000 |
| -5 | F524 | -5 | -5 | 5/16-24 | 1.296 | .500 | .531 | 1.000 |
| -6 | F624 | -6 | -6 | 3/8-24 | 1.296 | .609 | .641 | 1.000 |

Use MS21047 if applicable



MS21080 ONE LUG PLATENUT (NYLON INSERT)

NAS A B B C