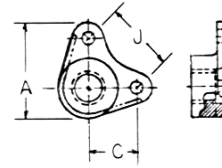


PLATENUTS

MS21055 CORNER PLATENUT (All Metal) 450Deg F

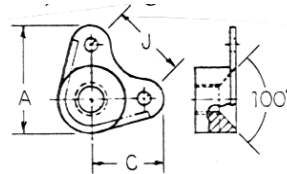
Dash#	NAS			A	C	J
	684	K3000	Thread	Max		
L06	06	-06	#6-32	.637	.344	.486
L08	08	-08	#8-32	.637	.344	.486
L3	3	-3	#10-32	.653	.344	.486
L4	4	-4	1/4-28	.852	.500	.707
L5	5	-5	5/16-24	.914	.500	.707
L6	6		3/8-24	.968	.500	.707
L7	7		7/16-20	1.101	.562	.795



MS21056 Same as MS21055 except: Stainless 450F or 800F with Silver Plating
Supercedes NAS684

MS21057 CORNER 100 Deg CSK PLATENUT (All Metal) 450Deg F

Dash#	NAS			A	C	J
	685		Thread	Max		
L06	-06		#6-32	.700	.344	.486
L08	-08		#8-32	.700	.344	.486
L3	-3		#10-32	.716	.344	.486
L4	-4		1/4-28	.955	.500	.707
L5	-5		5/16-24	1.044	.500	.707

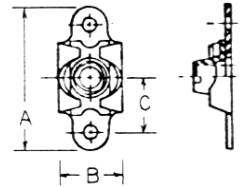


MS21058 Same as MS21057 except: Stainless 450F or 800F with Silver Plating
Supercedes NAS685

MS21059 TWO LUG FLOATING PLATENUT (All Metal) 450Deg F

Add K to Dash# to denote Dimpled rivet and center holes.

Dash#	NAS			A	B	B	C
	686	F5000	Thread	Max	Min	Max	
L04	-04	-04	#4-40	.948	.290	.416	.344
L06	-06	-06	#6-32	.948	.290	.416	.344
L08	-08	-08	#8-32	.948	.290	.416	.344
L3	-3	-3	#10-32	.948	.290	.416	.344
L4	-4	-4	1/4-28	1.292	.350	.516	.500
L5	-5	-5	5/16-24	1.292	.412	.609	.500
L6	-6	-6	3/8-24	1.292	.475	.680	.500

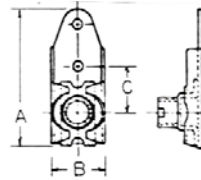


MS21060 Same as MS21059 except: Stainless 450F or 800F with Silver Plating
Supercedes NAS686

MS21061 ONE LUG FLOATING PLATENUT (All Metal) 450Deg F

Add K to Dash# to denote Dimpled rivet and center holes.

Dash#	NAS			A	B	B	C
	687	F2000	Thread	Max	Min	Max	
L04	-04	-04	#4-40	1.051	.290	.422	.344
L06	-06	-06	#6-32	1.051	.290	.422	.344
L08	-08	-08	#8-32	1.051	.290	.422	.344
L3	-3	-3	#10-32	1.051	.290	.422	.344
L4	-4	-4	1/4-28	1.306	.350	.531	.500
L5	-5	-5	5/16-24	1.306	.412	.641	.500

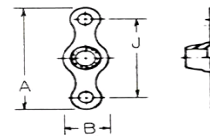


MS21062 Same as MS21061 except: Stainless 450F or 800F with Silver Plating
Supercedes NAS687

MS21069 TWO LUG PLATENUT - MINIATURE (All Metal) 450Deg F

Add K to dash# to denote Dimpled rivet and center holes.

Dash#	NAS			A	B	B	J
	697	MK1000	Thread	Max	Min	Max	
L02	-02	-02	#2-56	.410	.140	.162	.250
L04	-04	-04	#4-40	.630	.140	.260	.406
L06	-06	-06	#6-32	.661	.195	.265	.437
L08	-08	-08	#8-32	.692	.230	.297	.468
L3	-3	-3	#10-32	.724	.298	.328	.500
L4	-4	-4	1/4-28	.786	.380	.414	.562
L5	-5	-5	5/16-24	1.006	.475	.505	.718
L6	-6	-6	3/8-24	1.116	.580	.614	.828



MS21070 Same as MS21069 except: Stainless 450F or 800F with Silver Plating
Supercedes NAS697