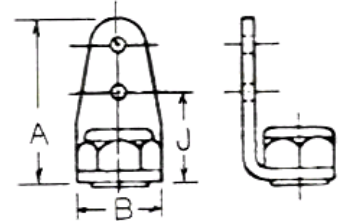


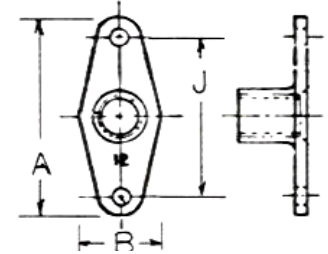
PLATENUTS

AN256 RIGHT ANGLE PLATENUT (NYLON INSERT) 250 Deg F



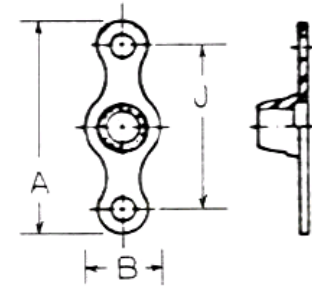
AN256	Thread	A	B	J
F6	#6-32	.859	.438	.468
F8	#8-32	.859	.438	.468
F10	#10-32	.859	.438	.468

MS20501 TWO LUG PLATENUT (ALL METAL) 1200 Deg F



Dash#	Thread	A Max	B Max	J Min	J Max
-632	#6-32	.986	.407	.686	.690
-832	#8-32	.986	.407	.686	.690
-1032	#10-32	.986	.407	.686	.690
-428	1/4-28	1.298	.516	.998	1.002
-524	5/16-24	1.298	.532	.998	1.002
-624	3/8-24	1.298	.641	.998	1.002

MS21047 TWO LUG PLATENUT (ALL METAL) 450 Deg F

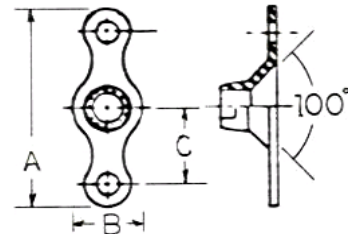


Add K to Dash# to denote Dimpled rivet holes.

Dash#	AN366	NAS 680	K1000	Thread	A Max	B Min	B Max	J Max
L04				#4-40	.948	.195	.260	.688
L06	F632	06	-06	#6-32	.948	.239	.260	.688
L08	F832	08	-08	#8-32	.948	.277	.297	.688
L3	F1032	3	-3	#10-32	.948	.308	.328	.688
L4	F428	4	-4	1/4-28	1.260	.308	.414	1.000
L5	F524	5	-5	5/16-24	1.292	.375	.505	1.000
L6	F624	6		3/8-24	1.292	.485	.614	1.000

MS21048 Same as MS21047 except: Stainless 450F or 800F with Silver Plating
 Supercedes AN362, AN366, NAS680

MS21049 TWO LUG 100Deg CSK PLATENUT (ALL METAL) 450 Deg F

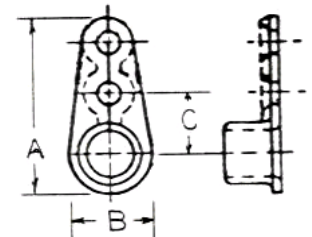


Add K to Dash# to denote Dimpled rivet holes.

Dash#	AN361	NAS 681	Thread	A Max	B Min	B Max	C
L06	-632	-06	#6-32	.948	.360	.422	.344
L08	-832	-08	#8-32	.948	.360	.422	.344
L3	-1032	-3	#10-32	.948	.406	.453	.344
L4	-428	-4	1/4-28	1.260	.535	.619	.500
L5	-524	-5	5/16-24	1.292	.681	.766	.500

MS21050 Same as MS21049 except: Stainless 450F or 800F with Silver Plating
 Supercedes NAS681 and AN361

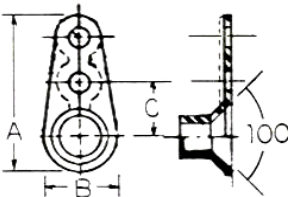
MS21051 ONE LUG PLATENUT (ALL METAL) 450 Deg F



Dash#	NAS 682	K2000	Thread	A Max	B Min	B Max	C
L06	-06	-06	#6-32	.935	.239	.297	.344
L08	-08	-08	#8-32	.935	.277	.297	.344
L3	-3	-3	#10-32	.950	.308	.328	.344
L4	-4	-4	1/4-28	.993	.375	.414	.344
L5	-5	-5	5/16-24	1.210	.485	.505	.500
L6	-6	-6	3/8-24	1.264	.594	.614	.500

MS21052 Same as MS21051 except: Stainless 450F or 800F with Silver Plating
 Supercedes NAS682

MS21053 ONE LUG 100 Deg CSK PLATENUT (ALL METAL) 450 Deg F



Add K to Dash# to denote Dimpled rivet holes.

Dash#	NAS 683	Thread	A Max	B Min	B Max	C
L08	-08	#8-32	.997	.360	.422	.344
L3	-3	#10-32	1.013	.406	.453	.344
L4	-4	1/4-28	1.252	.535	.619	.500
L5	-5	5/16-24	1.340	.681	.766	.500

MS21054 Same as MS21053 except: Stainless 450F or 800F with Silver Plating
 Supercedes NAS683