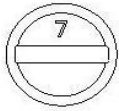


Skybolt Panel Fasteners and Kits

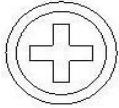
Panel Fastener Design	Series	Page
CLoc®2000 Series	Introduction	1
	Common Sets	2
	How to Choose the Right CLoc® Fastener	2A
	2500 Studs	3-4
	2600 Studs	5-6
	2700 Studs	7
	2800 Studs	8
	Retainers	9
	Anodizing	9
	201/203 Series Floating Receptacle	10A
	210 Series Receptacle	12
	211 Series Receptacle	13
	212 Series Receptacle	10
	F Series Receptacle	11
	213 Series Receptacle	10
CLoc®4000 an 5000 Series	Introduction	14
	Common Sets	15
	4000 Studs	16-17
	5000 Studs	16-17
	Stud Selection (Non Adjusting Receptacle)	18
	Stud Selection (Adjusting Receptacle)	19
	Flush Grommets (G,H,40G1)	20
	PlusFlush Grommets (N,N2,O, Ext Depth)	21
	PlusFlush Grommets (N3, ZG-LA, Ext Depth)	22
	Retainers	23
	SK-R500 Backing Grommet	23
	Panel Configuration	23
	214 Fixed Depth Non-Floating Receptacle	24
	244 Fixed Depth Floating Receptacle	24
	215 Adjustable Non-Floating Receptacle	25
	245 Adjusting Floating Receptacle	25
	SK-SP5 Tool	25
	F Series Receptacle	26
	SK2003-14A Platemount	27
	SK2003-24A Platemount	27
SK2003-42A Platemount	27	
SK2003-42ADJ Platemount	28	
SK2003AW5 CamWasher	29	
CLoc® Tools	CLoc® Drill Jigs, Drills, Pliers, Retainer Tools, Adj T	30-31
ZLoc® Series	Aviation Studs, Grommets	32
	Aviation Application Charts	33
	Design Options	34
	Ejector Studs	34
	Racing Fasteners	35
	Tabs and Springs	35
	ZLoc® Tooling	36
ALoc® Series	Studs, Grommets, Receptacles	37
	ALoc® Tooling	36
Southco® Series	#82 Series	38
	#85 Series	39
Panel Kits	Introduction	APP 01
	Complete Kit Cross Reference	APP 02-07
	Cessna Conversion Kit Application	APP 08
	Beech Bonanza Kit Application	APP 09
	Vans RV Cowling Fastener Kits	APP 10

Skybolt CLoc® 2000 Series Fasteners

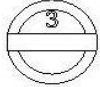
3 - Piece Series (Stud/Retainer - Locking Receptacle)



ZG2500, ZG2600
See Page 3 and 5

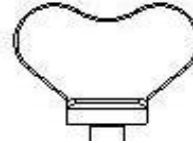


SK25S8, SK26S51
See Page 3 and 5
SK27S3, SK28S3,
ZG28S3
See Page 7 and 8

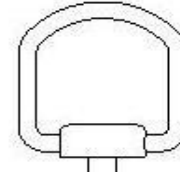


SK2500, SK2600
See Page 3 and 5
SK2700, SK2800
See Page 7 and 8

SK2500 and ZG2500 Series



SK2500W, ZG2500W,
SK2600W, ZG2600W
See Page 4 and 6



SK2500R, ZG2500R,
SK2600R, ZG2600R
See Page 4 and 6

SK2600 and ZG2600 Series

SK2700, SK2800 ZG2800

For 2500 and 2600 Series Studs, Drill Panel to .257
(Note: For panel thickness greater than .065, Drill Panel to .281)

For 2700 and 2800 Series Studs Non-Countersunk or Non-Dimpled Panels
Drill Panel to .310+ (Note: SK2600-SW Retainers will not work)
Dimpled Panels - Drill to .213 (#3) then dimple to 100 degrees

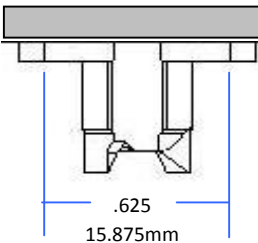


Retainers - See Page 9

SK212-10

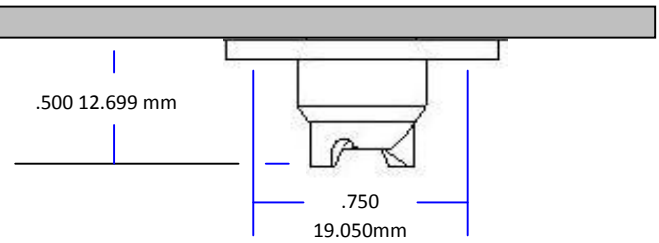
Drill Center Hole to .4375 (11.11mm) for all panels

Inner Panel



SK212-12

Drill Center Hole to .500 (12.7mm) for all panels



Receptacles - See Page 10 thru 13

Note: Add .100 to receptacle depth to allow for fastener protrusion when cycled lock to unlock (.500 + .100) = Clearance Requirement

Skybolt CLoc® 2000 Series Common Sets

Forget Charts - The followings assemblies solve 99% of all applications

Stainless Series - Flush Head

Skytanium® Series - Flush Head



SK28S3-SET1	\$7.04	Total Grip Range	ZG28S3-SET1	\$7.04	Total Grip Range
SK28S3-2S Phillips Stud		.020-.340	ZG28S3-2 Phillips Stud		.020-.340
SK2600-LWS Stud Retainer			SK2600-LWS Stud Retainer		
SK213-2 Adjustable Receptacle			SK213-28 Adjustable Receptacle		
3/32" Rivets			1/8" Rivets		

Most Common Aircraft Set

Most Common NASCAR Set

Stainless Series - Protruding Head

Skytanium® Series - Protruding Head



SK26S51-SET1	\$7.26	Total Grip Range	ZG2600-SET1	\$7.88	Total Grip Range
SK26S51-1S Phillips Stud		.020-.400	ZG2600-1 Collared Slot Stud		.020-.400
SK2600-LWS Stud Retainer			SK2600-LWS Stud Retainer		
SK213-2 Adjustable Receptacle			SK213-28 Adjustable Receptacle		
3/32" Rivets			1/8" Rivets		



ZG28S3/SK28S3



ZG2600

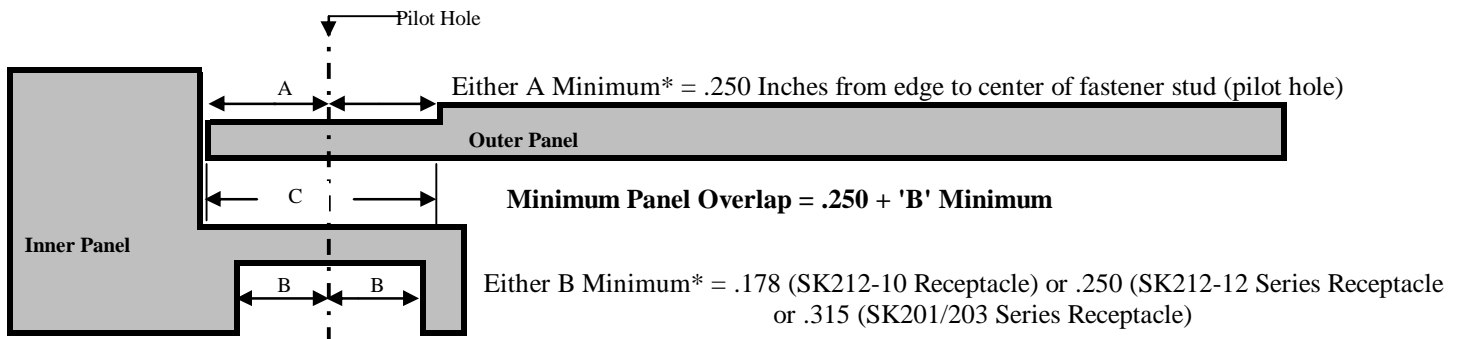


SK26S51



SK213-28

What does Overlap Mean?



*Minimums reflect part dimensions in a perfect world installation.

Installation Tools Required -

Template-213 or Skybone-21212	Template to drill rivet holes with #30 Drill
-------------------------------	--

How to Choose the Right CLoc® Fastener

The application will determine the correct fastener.

- 1) **Is the application non-structural with no mass consideration?**
Consider the CLoc® 2000 Series
- 2) **Is the application semi-structural with some mass to consider?**
Consider the CLoc® 4000 or 6000 Series (if lip or panel overlap greater than 1.00)
- 3) **Is available lip or panel overlap restrictive? (width required to mount receptacle)**
.355 to .500 – Consider the CLoc® 2500 Series
.500 to .710 – Consider the CLoc® 26000/2700/2800 Series
.710* or more – Consider the CLoc® 4000 or 6000 Series (.860* for SK244/245 Rec)
See diagram on Page 2 or Page 15 for panel configuration/restrictions.
- 4) **Is weight a factor?**
Consider the Skytanium® CLoc® ZG Series for 30% to 50% Weight savings (without sacrificing steel strength ratings)
- 5) **Do you prefer a Rivet Receptacle? A crimp Receptacle? A Backing Nut Receptacle? Or a bonded Receptacle?**

Need Convincing From Current Skybolt Customer Applications?

What is the most demanding endurance application that also requires the absolute lightest fastener? Auto racing. Skybolt has engineered fasteners that are lighter but stronger than anything on the market. What works on Sundays also earns its wings 24/7 in the aerospace world, the defense world, the commercial applications world, and the marine world.

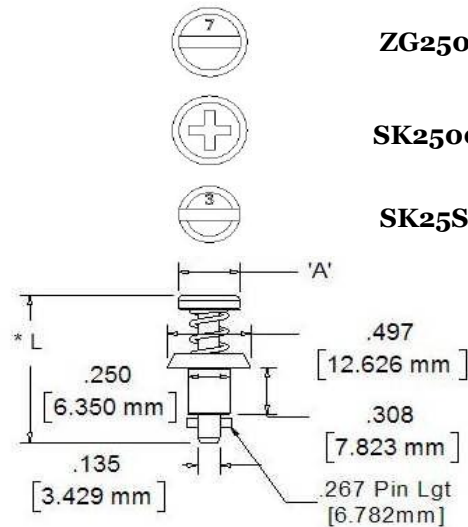
- Most NASCAR teams rely on Skybolt™ Skytanium® Series Fasteners for significant weight savings without any sacrifice in strength.
- One of the world's largest commercial aircraft companies found the perfect Avionics Fastener in the Skybolt™ Skytanium® CLoc® ZG2500 Series Fasteners – a 50% weight savings without sacrificing strength.
- The Cessna 150, 172, 177, and 182 fleet just found major relief in the new Skybolt™ SK2003 Cowling Mount using CLoc® 4000 Series Stainless Fasteners.
- The new Skybolt™ 6000 Series Fasteners are designed for IED (Explosive) applications and armor plating applications.
- One of the world's foremost producers of missile systems found the perfect CLoc® Adjustable Bonded Receptacle for composite structures.
- Another world leader in aerospace manufacturing found the perfect CLoc® Receptacle for an anti-abrasive application.

Skybolt CLoc® SK2500 ZG2500 Protruding Head Series

Stainless & Skytanium®

3 - Piece Series (Stud/Retainer - Locking Receptacle)

Light Weight Aerospace Panel Fasteners - 50% Weight Savings
 Designed for Restrictive (Minimum Overlap) Mounting Surfaces
 Reduced Thru-Hole Diameter For Mounting Close to Edge
 TSO-C148 Approved. Designed to Exceed NASM5591
 Honeywell-Airbus Approvals - A380 Avionics (ZG2500 Series)
 Tensile/Shear Loads of 200 LBS Working - 300 Lbs Plus Ultimate



ZG2500 Series Collared Slot
(A= .375)

SK2500 Series Standard Slot
(A= .302)

SK25S51 Series Phillips
(A= .302)



**SK25S51
ZG25S51**



**SK2500SC
ZG2500**



SK2500

Note: 2500 Series Studs may use SK212-10, SK212-12, or SK213 Series Receptacles

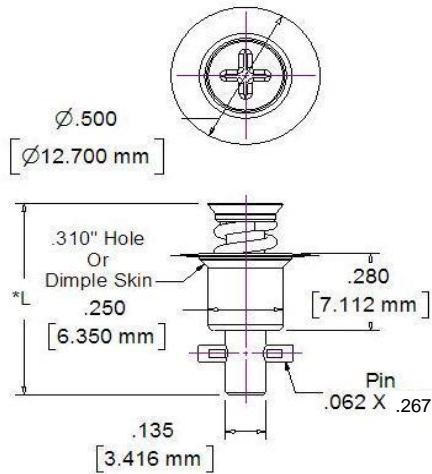
SK212-10 Series Fixed Depth Receptacle				Total		Protruding Head 2500 Series Stud				
Combined Panels				Stud Length		Stainless Standard Slot	Stainless Collared Slot	Stainless Phillips	Skytanium Collared Slot	Skytanium Phillips(1)
Thickness Decimal Min	Thickness Millimeter Max	Thickness Min	Thickness Max	Decimal	Millimeter					
.030	.059	0.762	1.499	.760	19.304	SK2500-0S	SK2500SC0S	SK25S51-0	ZG2500-0	ZG25S51-0
.060	.089	1.524	2.261	.790	20.066	SK2500-1S	SK2500SC1S	SK25S51-1	ZG2500-1	ZG25S51-1
.090	.119	2.286	3.023	.820	20.828	SK2500-2S	SK2500SC2S	SK25S51-2	ZG2500-2	ZG25S51-2
.120	.149	3.048	3.785	.850	21.590	SK2500-3S	SK2500SC3S	SK25S51-3	ZG2500-3	ZG25S51-3
.150	.179	3.810	4.547	.880	22.352	SK2500-4S	SK2500SC4S	SK25S51-4	ZG2500-4	ZG25S51-4
.180	.209	4.572	5.309	.910	23.114	SK2500-5S	SK2500SC5S	SK25S51-5	ZG2500-5	ZG25S51-5
.210	.239	5.334	6.071	.940	23.876	SK2500-6S	SK2500SC6S	SK25S51-6	ZG2500-6	ZG25S51-6
.240	.269	6.096	6.833	.970	24.638	SK2500-7S	SK2500SC7S	SK25S51-7	ZG2500-7	ZG25S51-7
.270	.299	6.858	7.595	1.000	25.400	SK2500-8S	SK2500SC8S	SK25S51-8	ZG2500-8	ZG25S51-8
.300	.329	7.620	8.357	1.030	26.162	SK2500-9S	SK2500SC9S	SK25S51-9	ZG2500-9	ZG25S51-9
.330	.359	8.382	9.119	1.060	26.924	SK2500-10S	SK2500SC10S	SK25S51-10	ZG2500-10	ZG25S51-10
.360	.389	9.144	9.881	1.090	27.686	SK2500-11S	SK2500SC11S	SK25S51-11	ZG2500-11	ZG25S51-11
.390	.419	9.906	10.643	1.120	28.448	SK2500-12S	SK2500SC12S	SK25S51-12	ZG2500-12	ZG25S51-12
.420	.449	10.668	11.405	1.150	29.210	SK2500-13S	SK2500SC13S	SK25S51-13	ZG2500-13	ZG25S51-13
.450	.479	11.430	12.167	1.180	29.972	SK2500-14S	SK2500SC14S	SK25S51-14	ZG2500-14	ZG25S51-14
.480	.509	12.192	12.929	1.210	30.734	SK2500-15S	SK2500SC15S	SK25S51-15	ZG2500-15	ZG25S51-15

Note: See page 9 for plating options and part# suffix. Note (1) ZG25S51 use stainless Stud/Skytanium Cup.

Skybolt CLoc® SK2500 ZG2500 Flush Head Series Stainless & Skytanium®

3 - Piece Series (Stud/Retainer - Locking Receptacle)

Light Weight Aerospace Panel Fasteners - 50% Weight Savings
 Designed for Restrictive (Minimum Overlap) Mounting Surfaces
 Reduced Thru-Hole Diameter For Mounting Close to Edge
 Tensile/Shear Loads of 200 LBS Working - 300 Lbs Plus Ultimate



**SK25S3
ZG25S3**

Note: 2500 Series Studs may use SK212-10, SK212-12, or SK213 Series Receptacles

SK212-10 Series				Total Stud Length L		Flush Head	
Fixed Depth Receptacle						2500 Series Stud	
Combined Panel						Stainless Phillips	Skytanium Phillips (1)
Thickness Decimal	Thickness Millimeter	Thickness Millimeter	Thickness Millimeter	Decimal	Millimeter		
.030	.059	0.762	1.499	.610	15.494	SK25S3-1S	ZG25S3-1
.060	.089	1.524	2.261	.640	16.256	SK25S3-2S	ZG25S3-2
.090	.119	2.286	3.023	.670	17.018	SK25S3-3S	ZG25S3-3
.120	.149	3.048	3.785	.700	17.780	SK25S3-4S	ZG25S3-4
.150	.179	3.810	4.547	.730	18.542	SK25S3-5S	ZG25S3-5
.180	.209	4.572	5.309	.760	19.304	SK25S3-6S	ZG25S3-6
.210	.239	5.334	6.071	.790	20.066	SK25S3-7S	ZG25S3-7
.240	.269	6.096	6.833	.820	20.828	SK25S3-8S	ZG25S3-8
.270	.299	6.858	7.595	.850	21.590	SK25S3-9S	ZG25S3-9
.300	.329	7.620	8.357	.880	22.352	SK25S3-10S	ZG25S3-10
.330	.359	8.382	9.119	.910	23.114	SK25S3-11S	ZG25S3-11
.360	.389	9.144	9.881	.940	23.876	SK25S3-12S	ZG25S3-12
.390	.419	9.906	10.643	.970	24.638	SK25S3-13S	ZG25S3-13
.420	.449	10.668	11.405	1.000	25.400	SK25S3-14S	ZG25S3-14
.450	.479	11.430	12.167	1.030	26.162	SK25S3-15S	ZG25S3-15
.480	.509	12.192	12.929	1.060	26.924	SK25S3-16S	ZG25S3-16

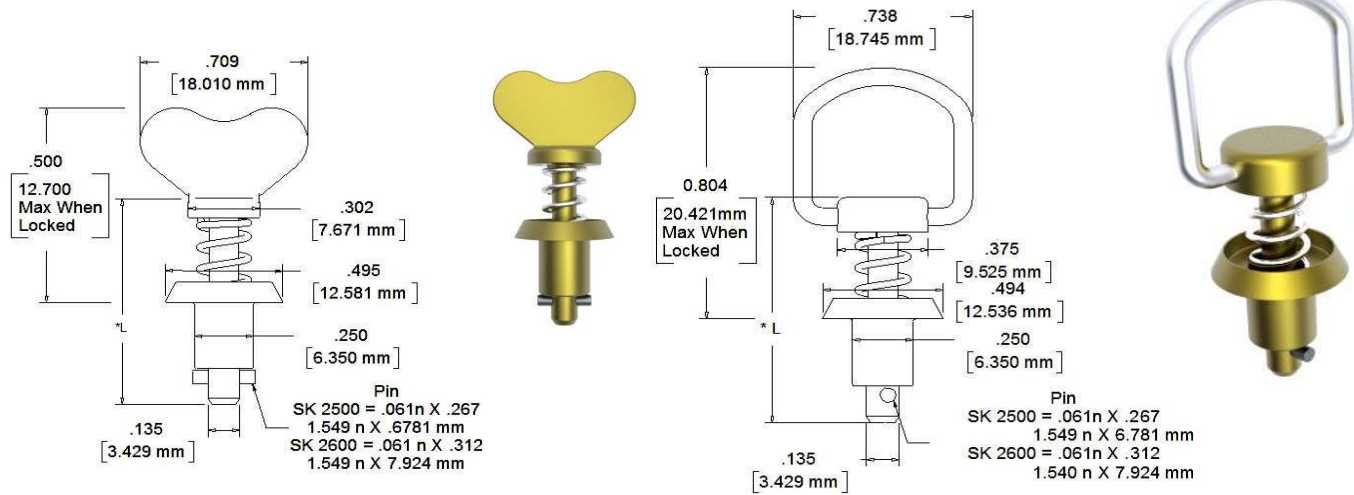
Note: See page 9 for plating options and part# suffix Note (1) ZG25S3 use stainless stud/Skytanium cup.

Skybolt CLoc® SK2500 Winged & Folding Ring Series

Stainless & Skytanium®

3 - Piece Series (Stud/Retainer - Locking Receptacle)

Light Weight Aerospace Panel Fasteners - 50% Weight Savings
 Designed for Restrictive (Minimum Overlap) Mounting Surfaces
 Reduced Thru-Hole Diameter For Mounting Close to Edge
 TSO-C148 Approved. Designed to Exceed NASM5591
 ZG2500R Series Honeywell-Airbus Approvals - A380 Avionics
 Tensile/Shear Loads of 200 LBS Working - 300 Lbs Plus Ultimate



SK2500W and ZG2500W

SK2500R and ZG2500R

Note: 2500 Series Studs may use SK212-10, SK212-12, or SK213 Series Receptacles.

SK212-10 Series				Winged Head 2500 Series Studs				Folding Ring Head 2500 Series Studs			
Fixed Depth Receptacle Combined Panel				Stud Length L				Stud Length L			
Thickness Decimal		Thickness Millimeter		L Decimal		L Millimeter		L Decimal		L Millimeter	
Min	Max	Min	Max	Decimal	Millimeter	Stainless Wing	Skytanium Wing	Decimal	Millimeter	Stainless Folding Ring	Skytanium Folding Ring
.030	.059	0.762	1.499	.760	19.304	SK2500-0SW	ZG2500-0W	.825	20.955	SK2500R0S	ZG2500R0
.060	.089	1.524	2.261	.790	20.066	SK2500-1SW	ZG2500-1W	.855	21.717	SK2500R1S	ZG2500R1
.090	.119	2.286	3.023	.820	20.828	SK2500-2SW	ZG2500-2W	.885	22.479	SK2500R2S	ZG2500R2
.120	.149	3.048	3.785	.850	21.590	SK2500-3SW	ZG2500-3W	.915	23.241	SK2500R3S	ZG2500R3
.150	.179	3.810	4.547	.880	22.352	SK2500-4SW	ZG2500-4W	.945	24.003	SK2500R4S	ZG2500R4
.180	.209	4.572	5.309	.910	23.114	SK2500-5SW	ZG2500-5W	.975	24.765	SK2500R5S	ZG2500R5
.210	.239	5.334	6.071	.940	23.876	SK2500-6SW	ZG2500-6W	1.005	25.527	SK2500R6S	ZG2500R6
.240	.269	6.096	6.833	.970	24.638	SK2500-7SW	ZG2500-7W	1.035	26.289	SK2500R7S	ZG2500R7
.270	.299	6.858	7.595	1.000	25.400	SK2500-8SW	ZG2500-8W	1.065	2.705	SK2500R8S	ZG2500R8
.300	.329	7.620	8.357	1.030	26.162	SK2500-9SW	ZG2500-9W	1.095	27.813	SK2500R9S	ZG2500R9
.330	.359	8.382	9.119	1.060	26.924	SK2500-10SW	ZG2500-10W	1.125	28.575	SK2500R10S	ZG2500R10
.360	.389	9.144	9.881	1.090	27.686	SK2500-11SW	ZG2500-11W	1.155	29.337	SK2500R11S	ZG2500R11
.390	.419	9.906	10.643	1.120	28.448	SK2500-12SW	ZG2500-12W	1.185	30.099	SK2500R12S	ZG2500R12
.420	.449	10.668	11.405	1.150	29.210	SK2500-13SW	ZG2500-13W	1.215	30.861	SK2500R13S	ZG2500R13
.450	.479	11.430	12.167	1.180	29.972	SK2500-14SW	ZG2500-14W	1.245	31.623	SK2500R14S	ZG2500R14
.480	.509	12.192	12.929	1.210	30.734	SK2500-15SW	ZG2500-15W	1.275	32.385	SK2500R15S	ZG2500R15

Note: See page 9 for plating options and part# suffix

Skybolt CLoc® SK2600 ZG2600 Protruding Head Series Stainless & Skytanium®

3 - Piece Series (Stud/Retainer - Locking Receptacle)

TSO-C148 Approved. Designed to Exceed NASM5591

Tensile/Shear Loads of 200 LBS Working - 300 Lbs Plus Ultimate



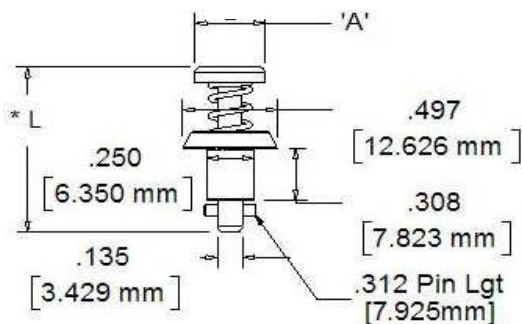
ZG2600 Series Collared Slot
A= .375



SK2600 Series Standard Slot
A= .302



SK26S51 Series Phillips Head
A= .302



ZG2600



**SK26S51
ZG26S51**



SK2600

Note: 2600 Series Studs will not fit SK212-10 Series Receptacles. Use SK212-12 or SK213 Series Receptacle

SK212 Series Fixed Depth Receptacle Combined Panel				SK213 Series Adjustable Depth Receptacle Combined Panel				Total Stud Length L		Protruding Head 2600 Series Studs			
Thickness Decimal		Thickness Millimeter		Thickness Decimal		Thickness Millimeter		Decimal	Millimeter	Stainless Standard Slot	Stainless Phillips	Skytanium Collared Slot	Skytanium Phillips (1)
Min	Max	Min	Max	Min	Max	Min	Max						
.030	.059	0.762	1.499	.010	.390	0.254	9.906	.760	19.304	SK2600-0S	SK26S51-0	ZG2600-0	ZG26S51-0
.060	.089	1.524	2.261	.040	.400	1.016	10.160	.790	20.066	SK2600-1S	SK26S51-1	ZG2600-1	ZG26S51-1
.090	.119	2.286	3.023	.070	.430	1.778	10.922	.820	20.828	SK2600-2S	SK26S51-2	ZG2600-2	ZG26S51-2
.120	.149	3.048	3.785	.100	.460	2.540	11.684	.850	21.590	SK2600-3S	SK26S51-3	ZG2600-3	ZG26S51-3
.150	.179	3.810	4.547	.130	.490	3.302	12.446	.880	22.352	SK2600-4S	SK26S51-4	ZG2600-4	ZG26S51-4
.180	.209	4.572	5.309	.160	.520	4.064	13.208	.910	23.114	SK2600-5S	SK26S51-5	ZG2600-5	ZG26S51-5
.210	.239	5.334	6.071	.190	.550	4.826	13.970	.940	23.876	SK2600-6S	SK26S51-6	ZG2600-6	ZG26S51-6
.240	.269	6.096	6.833	.220	.580	5.588	14.732	.970	24.638	SK2600-7S	SK26S51-7	ZG2600-7	ZG26S51-7
.270	.299	6.858	7.595	.250	.610	6.350	15.494	1.000	25.400	SK2600-8S	SK26S51-8	ZG2600-8	ZG26S51-8
.300	.329	7.620	8.357	.280	.640	7.112	16.256	1.030	26.162	SK2600-9S	SK26S51-9	ZG2600-9	ZG26S51-9
.330	.359	8.382	9.119	.310	.670	7.874	17.018	1.060	26.924	SK2600-10S	SK26S51-10	ZG2600-10	ZG26S51-10
.360	.389	9.144	9.881	.340	.700	8.636	17.780	1.090	27.686	SK2600-11S	SK26S51-11	ZG2600-11	ZG26S51-11
.390	.419	9.906	10.643	.370	.730	9.398	18.542	1.120	28.448	SK2600-12S	SK26S51-12	ZG2600-12	ZG26S51-12
.420	.449	10.668	11.405	.400	.760	10.160	19.304	1.150	29.210	SK2600-13S	SK26S51-13	ZG2600-13	ZG26S51-13
.450	.479	11.430	12.167	.430	.790	10.922	20.066	1.180	29.972	SK2600-14S	SK26S51-14	ZG2600-14	ZG26S51-14
.480	.509	12.192	12.929	.460	.820	11.684	20.828	1.210	30.734	SK2600-15S	SK26S51-15	ZG2600-15	ZG26S51-15

Note: See page 9 for plating options and part# suffix. Note (1) ZG26S51 use stainless stud/Skytanium cup. Charted Dash# one less than Camloc

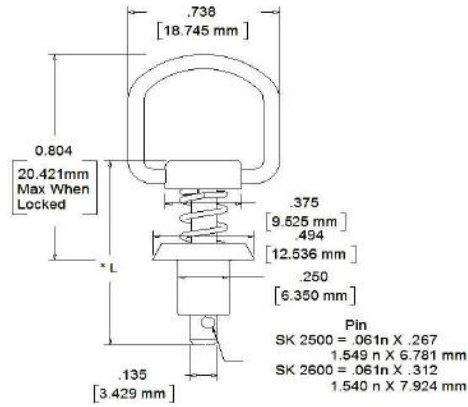
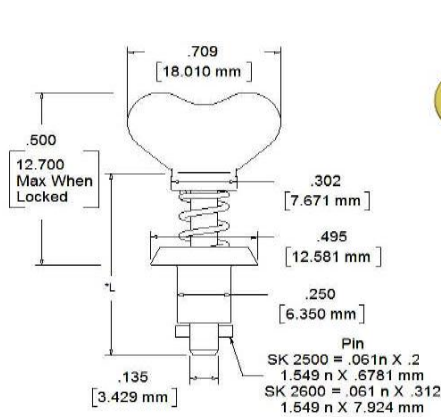
Skybolt CLoc® SK2600 Winged & Folding Ring Series

Stainless & Skytanium®

3 - Piece Series (Stud/Retainer - Locking Receptacle)

TSO-C148 Approved. Designed to Exceed NASM5591

Tensile/Shear Loads of 200 LBS Working - 300 Lbs Plus Ultimate



SK2600W and ZG2600W

SK2600R and ZG2600R

Note: 2600 Series Studs will not fit SK212-10 Series Receptacles. Use SK212-12 or SK213 Series Receptacle

SK212 Series				SK213-5 Series				Winged 2600 Series Studs				Folding Ring Head 2600 Series Studs			
Fixed Depth Receptacle Combined Panel				Adjustable Depth Receptacle Combined Panel				Total Stud Length				Total Stud Length			
Thickness		Thickness		Thickness		Thickness		L		Stainless Wing	Skytanium Wing	L		Stainless Folding Ring	Skytanium Folding Ring
Decimal	Millimeter	Decimal	Millimeter	Decimal	Millimeter	Decimal	Millimeter	Decimal	Millimeter			Decimal	Millimeter		
Min	Max	Min	Max	Min	Max	Min	Max	Decimal	Millimeter			Decimal	Millimeter		
.030	.059	0.762	1.499	.010	.390	0.254	9.906	.760	19.304	SK2600-0SW	ZG2600-0W	.825	20.955	SK2600R0S	ZG2600R0
.060	.089	1.524	2.261	.040	.400	1.016	10.160	.790	20.066	SK2600-1SW	ZG2600-1W	.855	21.717	SK2600R1S	ZG2600R1
.090	.119	2.286	3.023	.070	.430	1.778	10.922	.820	20.828	SK2600-2SW	ZG2600-2W	.885	22.479	SK2600R2S	ZG2600R2
.120	.149	3.048	3.785	.100	.460	2.540	11.684	.850	21.590	SK2600-3SW	ZG2600-3W	.915	23.241	SK2600R3S	ZG2600R3
.150	.179	3.810	4.547	.130	.490	3.302	12.446	.880	22.352	SK2600-4SW	ZG2600-4W	.945	24.003	SK2600R4S	ZG2600R4
.180	.209	4.572	5.309	.160	.520	4.064	13.208	.910	23.114	SK2600-5SW	ZG2600-5W	.975	24.765	SK2600R5S	ZG2600R5
.210	.239	5.334	6.071	.190	.550	4.826	13.970	.940	23.876	SK2600-6SW	ZG2600-6W	1.005	25.527	SK2600R6S	ZG2600R6
.240	.269	6.096	6.833	.220	.580	5.588	14.732	.970	24.638	SK2600-7SW	ZG2600-7W	1.035	26.289	SK2600R7S	ZG2600R7
.270	.299	6.858	7.595	.250	.610	6.350	15.494	1.000	25.400	SK2600-8SW	ZG2600-8W	1.065	27.051	SK2600R8S	ZG2600R8
.300	.329	7.620	8.357	.280	.640	7.112	16.256	1.030	26.162	SK2600-9SW	ZG2600-9W	1.095	27.813	SK2600R9S	ZG2600R9
.330	.359	8.382	9.119	.310	.670	7.874	17.018	1.060	26.924	SK2600-10SW	ZG2600-10W	1.125	28.575	SK2600R10S	ZG2600R10
.360	.389	9.144	9.881	.340	.700	8.636	17.780	1.090	27.686	SK2600-11SW	ZG2600-11W	1.155	29.337	SK2600R11S	ZG2600R11
.390	.419	9.906	10.643	.370	.730	9.398	18.542	1.120	28.448	SK2600-12SW	ZG2600-12W	1.185	30.099	SK2600R12S	ZG2600R12
.420	.449	10.668	11.405	.400	.760	10.160	19.304	1.150	29.210	SK2600-13SW	ZG2600-13W	1.215	30.861	SK2600R13S	ZG2600R13
.450	.479	11.430	12.167	.430	.790	10.922	20.066	1.180	29.972	SK2600-14SW	ZG2600-14W	1.245	31.623	SK2600R14S	ZG2600R14
.480	.509	12.192	12.929	.460	.820	11.684	20.828	1.210	30.734	SK2600-15SW	ZG2600-15W	1.275	32.385	SK2600R15S	ZG2600R15

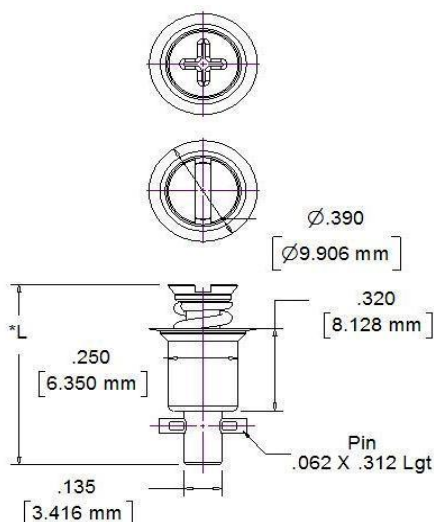
Note: See page 9 for plating options and part# suffix. Charted Dash# one less than Camloc.

Skybolt CLoc® SK2700 Flush Head Series Stainless

3 - Piece Series (Stud/Retainer - Locking Receptacle)

TSO-C148 Approved. Designed to Exceed NASM5591

Tensile/Shear Loads of 200 LBS Working - 300 Lbs Plus Ultimate



SK27S3S



SK2700S

Note: 2700 Series Studs will not fit SK212-10 Series Receptacles. Use SK212-12 or SK213 Series Receptacle

SK212 Series Fixed Depth Receptacle Combined Panel				SK213 Series Adjustable Depth Receptacle Combined Panel				Total Stud Length L		Flush Head 2700 Series Stud	
Thickness Decimal		Thickness Millimeter		Thickness Decimal		Thickness Millimeter		Decimal	Millimeter	Stainless	Stainless
Min	Max	Min	Max	Min	Max	Min	Max			Standard Slot	Phillips
.030	.059	0.762	1.499	.010	.390	0.254	9.906	.610	15.494	SK2700-1S	SK27S3-1S
.060	.089	1.524	2.261	.040	.400	1.016	10.160	.640	16.256	SK2700-2S	SK27S3-2S
.090	.119	2.286	3.023	.070	.430	1.778	10.922	.670	17.018	SK2700-3S	SK27S3-3S
.120	.149	3.048	3.785	.100	.460	2.540	11.684	.700	17.780	SK2700-4S	SK27S3-4S
.150	.179	3.810	4.547	.130	.490	3.302	12.446	.730	18.542	SK2700-5S	SK27S3-5S
.180	.209	4.572	5.309	.160	.520	4.064	13.208	.760	19.304	SK2700-6S	SK27S3-6S
.210	.239	5.334	6.071	.190	.550	4.826	13.970	.790	20.066	SK2700-7S	SK27S3-7S
.240	.269	6.096	6.833	.220	.580	5.588	14.732	.820	20.828	SK2700-8S	SK27S3-8S
.270	.299	6.858	7.595	.250	.610	6.350	15.494	.850	21.590	SK2700-9S	SK27S3-9S
.300	.329	7.620	8.357	.280	.640	7.112	16.256	.880	22.352	SK2700-10S	SK27S3-10S
.330	.359	8.382	9.119	.310	.670	7.874	17.018	.910	23.114	SK2700-11S	SK27S3-11S
.360	.389	9.144	9.881	.340	.700	8.636	17.780	.940	23.876	SK2700-12S	SK27S3-12S
.390	.419	9.906	10.643	.370	.730	9.398	18.542	.970	24.638	SK2700-13S	SK27S3-13S
.420	.449	10.668	11.405	.400	.760	10.160	19.304	1.000	25.400	SK2700-14S	SK27S3-14S
.450	.479	11.430	12.167	.430	.790	10.922	20.066	1.030	26.162	SK2700-15S	SK27S3-15S
.480	.509	12.192	12.929	.460	.820	11.684	20.828	1.060	26.924	SK2700-16S	SK27S3-16S

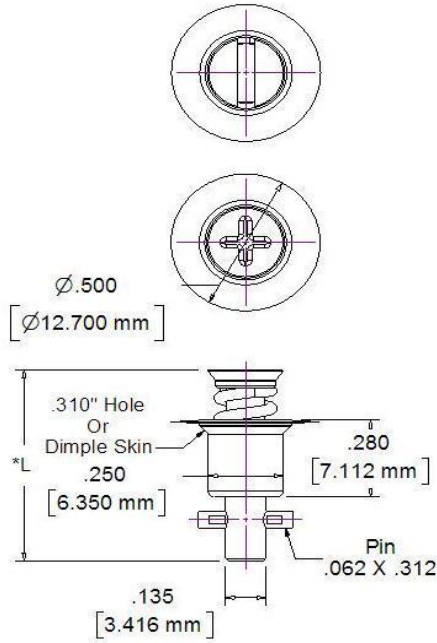
Note: See page 9 for plating options and part# suffix

Skybolt CLoc® SK2800 Flush Head Series Stainless & Skytanium®

3 - Piece Series (Stud/Retainer - Locking Receptacle)

TSO-C148 Approved. Designed to Exceed NASM5591

Tensile/Shear Loads of 200 LBS Working - 300 Lbs Plus Ultimate



SK2800S



SK28S3 and ZG28S3

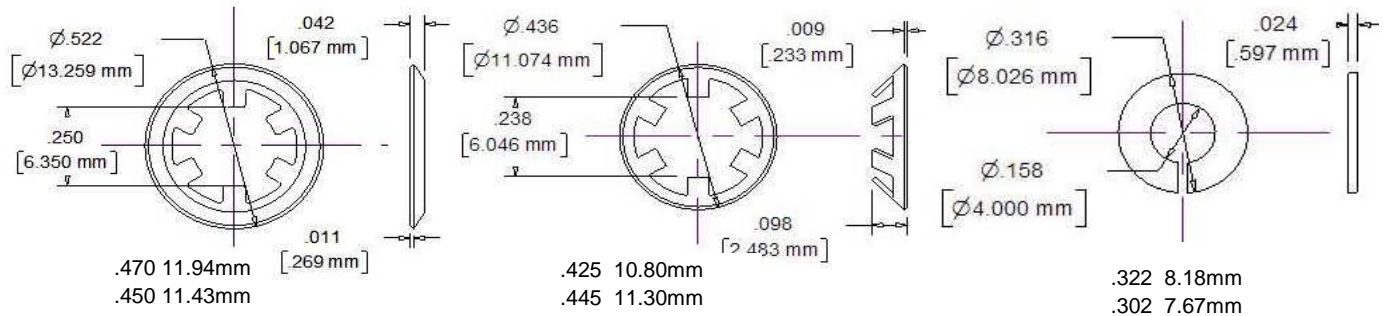
Note: 2800 Series Studs will not fit SK212-10 Series Receptacles. Use SK212-12 or SK213 Series Receptacle

SK212 Series Fixed Depth Receptacle Combined Panel				SK213 Series Adjustable Depth Receptacle Combined Panel				Total Stud Length L		Flush Head 2800 Series Stud		
Thickness Decimal		Thickness Millimeter		Thickness Decimal		Thickness Millimeter		Decimal	Millimeter	Stainless Standard Slot	Stainless Phillips	Skytanium Phillips (1)
Min	Max	Min	Max	Min	Max	Min	Max					
.030	.059	0.762	1.499	.010	.390	0.254	9.906	.610	15.494	SK2800-1S	SK28S3-1S	ZG28S3-1
.060	.089	1.524	2.261	.040	.400	1.016	10.160	.640	16.256	SK2800-2S	SK28S3-2S	ZG28S3-2
.090	.119	2.286	3.023	.070	.430	1.778	10.922	.670	17.018	SK2800-3S	SK28S3-3S	ZG28S3-3
.120	.149	3.048	3.785	.100	.460	2.540	11.684	.700	17.780	SK2800-4S	SK28S3-4S	ZG28S3-4
.150	.179	3.810	4.547	.130	.490	3.302	12.446	.730	18.542	SK2800-5S	SK28S3-5S	ZG28S3-5
.180	.209	4.572	5.309	.160	.520	4.064	13.208	.760	19.304	SK2800-6S	SK28S3-6S	ZG28S3-6
.210	.239	5.334	6.071	.190	.550	4.826	13.970	.790	20.066	SK2800-7S	SK28S3-7S	ZG28S3-7
.240	.269	6.096	6.833	.220	.580	5.588	14.732	.820	20.828	SK2800-8S	SK28S3-8S	ZG28S3-8
.270	.299	6.858	7.595	.250	.610	6.350	15.494	.850	21.590	SK2800-9S	SK28S3-9S	ZG28S3-9
.300	.329	7.620	8.357	.280	.640	7.112	16.256	.880	22.352	SK2800-10S	SK28S3-10S	ZG28S3-10
.330	.359	8.382	9.119	.310	.670	7.874	17.018	.910	23.114	SK2800-11S	SK28S3-11S	ZG28S3-11
.360	.389	9.144	9.881	.340	.700	8.636	17.780	.940	23.876	SK2800-12S	SK28S3-12S	ZG28S3-12
.390	.419	9.906	10.643	.370	.730	9.398	18.542	.970	24.638	SK2800-13S	SK28S3-13S	ZG28S3-13
.420	.449	10.668	11.405	.400	.760	10.160	19.304	1.000	25.400	SK2800-14S	SK28S3-14S	ZG28S3-14
.450	.479	11.430	12.167	.430	.790	10.922	20.066	1.030	26.162	SK2800-15S	SK28S3-15S	ZG28S3-15
.480	.509	12.192	12.929	.460	.820	11.684	20.828	1.060	26.924	SK2800-16S	SK28S3-16S	ZG28S3-16

Note: See page 9 for plating options and part# suffix. Note (1) ZG28S3 use stainless stud/Skytanium cup.

Skybolt CLoc® 2000 Series Retainers

3 - Piece Series (Stud/Retainer - Locking Receptacle)



SK2600-LWS
Solid Retaining Ring
General Purpose

This retainer is used in 99% of all applications. Installed with SK-T26 Tool.

SK27S5-1
Solid Retaining Ring
for Dimpled Panels

This retainer is designed for SK2700 or SK2800 Studs installed in a thin dimpled panel. Installed with SK-T26 Tool.

SK2600-SW
Split Ring Retainer

This retainer is designed for a curved panel installation that require the studs to retract when unlocked. They will not work with any 2700 or 2800 Series Studs with oversized drilled holes for the cup dimple. They will only work with .257 holes (after dimpling panel) or a countersunk panel with a .257 hole.

Install with SK-T26 Tool. Place retainer flat on end of cup and push retainer until secure with the panel. Note: If the retainer bends, simply reset the retainer and try again. The tool will secure the retainer properly faced with the panel.

To install SW Retainer, simply bend open at the split with a needle nosed pliers; Twist ring around the cross-pin; Re-bend the spit end closed.

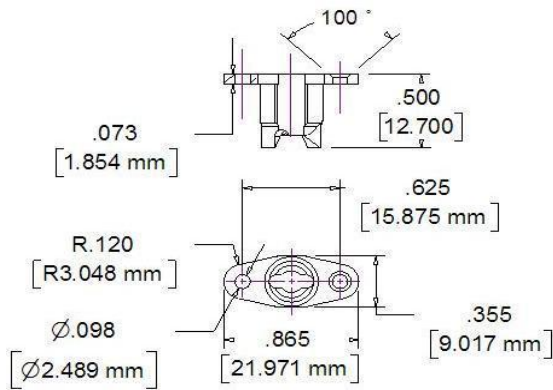
MIL-A-8625 Anodizing

Standard Anodizing MIL-A-8625, Type II, Class 1		
Add		
Finish	Part# Suffix	Example
Clear	A	ZG2500-4A Standard anodizing - Clear
Standard Anodizing MIL-A-8625, Type II, Class 2		
Add		
Finish	Part# Suffix	Example
Black	A1BLK	ZG2500-4A1BLK Standard anodizing - Black
Red	A1RED	ZG2500-4A1BLK Standard anodizing - Red
Hard Anodizing MIL-A-8625, Type III, Class 1		
Add		
Finish	Part# Suffix	Example
Clear	B	ZG2500-4B Hard anodizing - Clear
Hard Anodizing MIL-A-8625, Type III, Class 2		
Add		
Finish	Part# Suffix	Example
Black	B1BLK	ZG2500-4B1BLK Hard anodizing - Black
Red	B1RED	ZG2500-4B1RED Hard anodizing - Red

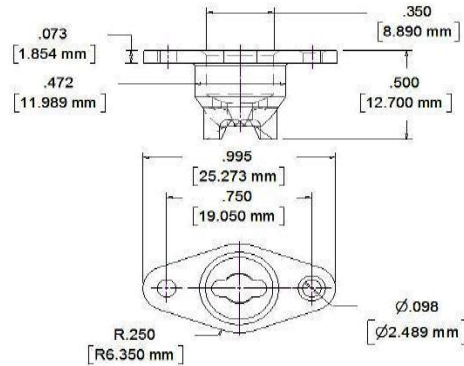
Skybolt CLoc® 2000 Series Rivet Receptacles

3 - Piece Series (Stud/Retainer - Locking Receptacle)

Standard SK212 Fixed Depth Receptacles



SK212-10



SK212-12



	Material	Finish	Rivet Size	Weight
SK212-10	Steel	Zinc	3/32	.0100/4.5g
SK212-10A	Alum6061	None	3/32	.0030/1.4
SK212-10AB	Alum6061	Anodized	3/32	.0030/1.4
SK212-10S	Stain303	QQ-P-35	3/32	.0100/4.5
SK212E10B1	Alum6061	None	Bond	.0030/1.4

	Material	Finish	Rivet Size	Weight
SK212-12	Steel	Zinc	3/32	.0105/4.8g
SK212-12A	Alum6061	None	3/32	.0040/1.8
SK212-12AB1	Alum6061	Anodized	3/32	.0040/1.8
SK212-12A8	Alum6061	None	1/8	.0040/1.8
SK212-12A8B1	Alum6061	Anodized	1/8	.0040/1.8
* SK212-12ACB1	Alum6061	Anodized	1/8	.0040/1.8
SK212-12S	Stain303	QQ-P-35	3/32	.0105/4.8
SK212E12S	Stain303	QQ-P-35	Bond	.0105/4.8
SK212E12AB1	Alum6061	Anodized	Bond	.0040/1.8

* Anti-Chafe

SK213 Adjustable Receptacles

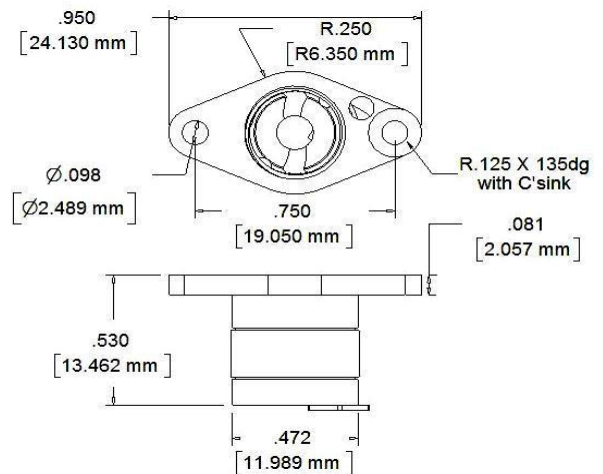


SK213-2D Shown

Standard Adjustable Depth Receptacles

	Material	Finish	Rivet Size	Weight	L
SK213-1	Skytanium	None	3/32	.0070/3.2	.410
SK213-2	Skytanium	None	3/32	.0070/3.2	.530
SK213-2D	Skytanium	None	3/32 Dim	.0070/3.2	.530
SK213-2A1	Skytanium	Anodized	3/32	.0070/3.2	.530
SK213-26 (1)	Skytanium	None	3/32	.0070/3.2	.530
SK213-28	Skytanium	None	1/8	.0070/3.2	.530
SK213-5	Skytanium	None	3/32	.0070/3.2	.530
SK213-58	Skytanium	None	1/8	.0070/3.2	.530
SK213E2A1	Skytanium	Anodized	Bond	.0070/3.2	.530

Note: SK213-26 has 11/16 Rivet Spacing



SK213-2 (3/32 Rivet holes) shown
SK213-28 (1/8 Rivet Holes)

Skybolt CLoc® 2000 Series Floating Receptacles

SK201 and SK203 Floating Receptacles

Rivet - 3/32 and 1/8, Bonded Versions

Fixed Depth and Adjustable Versions

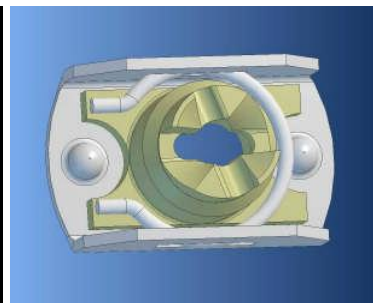
Float +/- .050 (x and y)

Removable - Replacable Insert

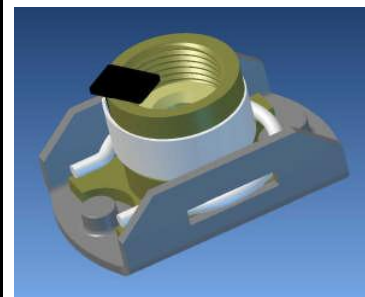
Cage Dimensions - 1.020 x .630

Panel Overlap - Max Float - Desired .650

Fixed Depth		Rivet/		Height	Lbs	Grams	Grip	
Insert	Cage	Insert	Spacing				SK28S3-2	SK26S51-2
SK201C00	Stainless	Stainless	Bonded	.550	.0180	8.2	.060-.089	.090-.119
SK201C21	Stainless	Stainless	3/32x.75	.550	.0180	8.2	.060-.089	.090-.119
SK201C81	Stainless	Stainless	1/8x.75	.550	.0180	8.2	.060-.089	.090-.119
SK201A00B1	Stainless	Skytanium	Bonded	.550	.0110	5.9	.060-.089	.090-.119
SK201A2B1	Stainless	Skytanium	3/32x.75	.550	.0110	5.9	.060-.089	.090-.119
SK201A8B1	Stainless	Skytanium	1/8x.75	.550	.0110	5.9	.060-.089	.090-.119
SK201AA00B1	Aluminum	Skytanium	Bonded	.550	.0170	7.7	.060-.089	.090-.119
SK201AA2B1	Aluminum	Skytanium	3/32x.75	.550	.0170	7.7	.060-.089	.090-.119
SK201AA8B1	Aluminum	Skytanium	1/8x.75	.550	.0170	7.7	.060-.089	.090-.119



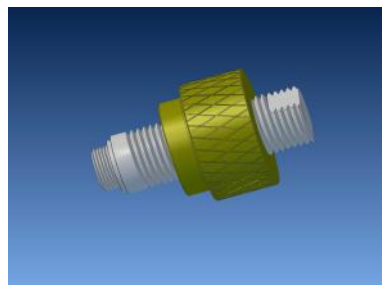
Adjustable Depth		Rivet/		Height	Lbs	Grams	Grip	
Insert*	Cage	Insert	Spacing				SK28S3-1	SK26S51-1
SK203C00	Stainless	Stainless	Bonded	.570	.0270	12.3	.010-.250	.010-.330
SK203C01	Stainless	Stainless	Bonded	.457	.0200	9.1	.010-.250	.090-.330
SK203C21	Stainless	Stainless	3/32x.75	.457	.0200	9.1	.010-.250	.090-.330
SK203C81	Stainless	Stainless	1/8x.75	.457	.0200	9.1	.010-.250	.090-.330
SK203A00A1	Stainless	Skytanium	Bonded	.570	.0270	12.3	.010-.250	.010-.330
SK203A01A1	Stainless	Skytanium	Bonded	.457	.0200	9.1	.010-.250	.090-.330
SK203A2A1	Stainless	Skytanium	3/32x.75	.457	.0200	9.1	.010-.250	.090-.330
SK203A8A1	Stainless	Skytanium	1/8x.75	.457	.0200	9.1	.010-.250	.090-.330
SK203AA00A1	Aluminum	Skytanium	Bonded	.570	.0270	12.3	.010-.250	.010-.330
SK203AA01A1	Aluminum	Skytanium	Bonded	.457	.0200	9.1	.010-.250	.090-.330
SK203AA2A1	Aluminum	Skytanium	3/32x.75	.457	.0200	9.1	.010-.250	.090-.330
SK203AA8A1	Aluminum	Skytanium	1/8x.75	.457	.0200	9.1	.010-.250	.090-.330



Note: Remove insert to rivet. Adjustment requires access to backside.

SK201T1 and SK203T1 Bond - Clamping Tool

Secures and seals insert for bond setup and cure

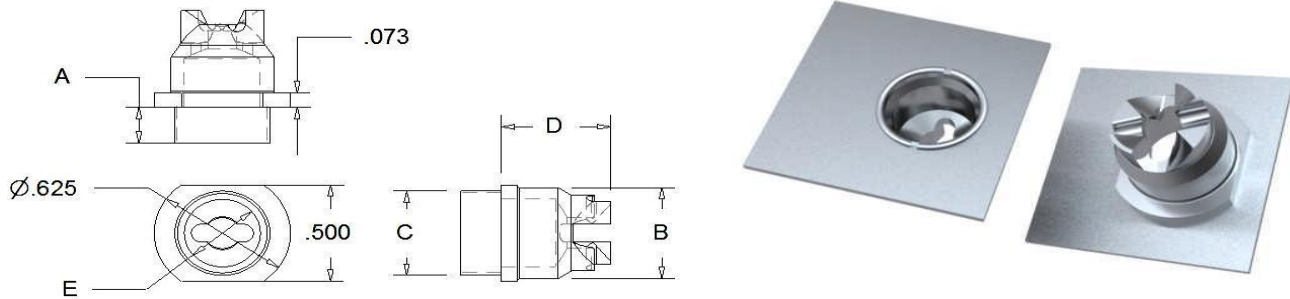


SK203T1 Shown

Skybolt CLoc® 2000 Series *Flare* Receptacles

3 - Piece Series (Stud/Retainer - Locking Receptacle)

New - CLoc® Rivetless Easy Install Receptacles - Flare Technology US Patent Pending



SK212F10 Part#	Thickness Decimal		Thickness Millimeter		A		B		C		D		E		Finish	Weight
	Min	Max	mm	mm	dec	mm	dec	mm	dec	mm	dec	mm	dec	mm		
SK212F10A1	.010	.045	0.254	1.143	.075	1.905	.406	10.312	.375	9.525	.430	10.922	.3125	7.938	None	.0030/1.4g
SK212F10A2	.040	.085	1.016	2.159	.115	2.921	.406	10.312	.375	9.525	.430	10.922	.3125	7.938	None	.0030/1.4
SK212F10A3	.080	.125	2.032	3.175	.155	3.937	.406	10.312	.375	9.525	.430	10.922	.3125	7.938	None	.0030/1.4
SK212F10A1B1	.010	.045	0.254	1.143	.075	1.905	.406	10.312	.375	9.525	.430	10.922	.3125	7.938	ClassIII	.0030/1.4
SK212F10A2B1	.040	.085	1.016	2.159	.115	2.921	.406	10.312	.375	9.525	.430	10.922	.3125	7.938	ClassIII	.0030/1.4
SK212F10A3B1	.080	.125	2.032	3.175	.155	3.937	.406	10.312	.375	9.525	.430	10.922	.3125	7.938	ClassIII	.0030/1.4

SK212F12 Part#	Thickness Decimal		Thickness Millimeter		A		B		C		D		E		Finish	Weight
	Min	Max	mm	mm	dec	mm	dec	mm	dec	mm	dec	mm	dec	mm		
SK212F12A1	.010	.045	0.254	1.143	.075	1.905	.472	11.989	.4375	11.11	.430	10.922	.345	8.763	None	.0040/1.8g
SK212F12A2	.040	.085	1.016	2.159	.115	2.921	.472	11.989	.4375	11.11	.430	10.922	.345	8.763	None	.0040/1.8g
SK212F12A3	.080	.125	2.032	3.175	.155	3.937	.472	11.989	.4375	11.11	.430	10.922	.345	8.763	None	.0040/1.8g
SK212F12A1B1	.010	.045	0.254	1.143	.075	1.905	.472	11.989	.4375	11.11	.430	10.922	.345	8.763	ClassIII	.0040/1.8g
SK212F12A2B1	.040	.085	1.016	2.159	.115	2.921	.472	11.989	.4375	11.11	.430	10.922	.345	8.763	ClassIII	.0040/1.8g
SK212F12A3B1	.080	.125	2.032	3.175	.155	3.937	.472	11.989	.4375	11.11	.430	10.922	.345	8.763	ClassIII	.0040/1.8g

SK213F2 Part#	Thickness Decimal		Thickness Millimeter		A		B		C		D		E		Finish	Weight
	Min	Max	mm	mm	dec	mm	dec	mm	dec	mm	dec	mm	dec	mm		
SK213F2-1	.010	.045	0.254	1.143	.075	1.905	.472	11.989	.4375	11.11	.430	10.922	.345	8.763	None	.0060/2.8g
SK213F2-2	.040	.085	1.016	2.159	.115	2.921	.472	11.989	.4375	11.11	.430	10.922	.345	8.763	None	.0060/2.8g
SK213F2-3	.080	.125	2.032	3.175	.155	3.937	.472	11.989	.4375	11.11	.430	10.922	.345	8.763	None	.0060/2.8g

Use Flaring Tool - SK-FT1

Skybolt CLoc® 2000 Series Threaded Receptacles

SK210-2S

Blind Receptacle - Countersunk Flange

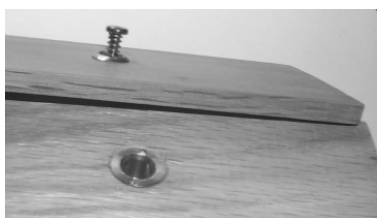
Excellent for wood, plastic, or composite structures.
 Non-Adjustable Depth - Recommend Phillips Studs
 Self locking when tapped as suggested or use adhesive



Protruding Stud	Outer Panel Thickness(1)	Flush Stud	Outer Panel Thickness(1)
SK26S51-3	.010-.060	SK28S3-4S	.010-.030
SK26S51-4	.060-.090	SK28S3-5S	.030-.060
SK26S51-5	.090-.120	SK28S3-6S	.060-.090
SK26S51-6	.120-.150	SK28S3-7S	.090-.120
SK26S51-7	.150-.180	SK28S3-8S	.120-.150
SK26S51-8	.180-.210	SK28S3-9S	.150-.180
SK26S51-9	.210-.240	SK28S3-10S	.180-.210
SK26S51-10	.240-.270	SK28S3-11S	.210-.240
SK26S51-11	.270-.300		

Outer Panel Hole (To .065)	Drill .257
Outer Panel Hole (Greater than .065)	Drill .281
Support Hole	Drill 13/32 (1)
Tap	1/2-13

Receptacle Length .600
 Note: Total length with stud engaged = .700

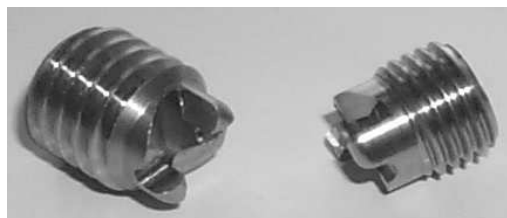


SK210-30S

SK210-31S

Blind Receptacle - Adjustable Depth

Excellent for wood, plastic, or composite structures.
 Adjustable Depth
 Self locking when tapped as suggested or use adhesive



Protruding Stud	Outer Panel Thickness(2)	Flush Stud	Outer Panel Thickness(2)
SK26S51-1	.100-.130	SK28S3-1S	.040-.070
SK26S51-2	.130-.160	SK28S3-2S	.070-.100
SK26S51-3	.160-.190	SK28S3-3S	.100-.130
SK26S51-4	.190-.220	SK28S3-4S	.130-.160
SK26S51-5	.220-.250	SK28S3-5S	.160-.190
SK26S51-6	.250-.280	SK28S3-6S	.190-.220
SK26S51-7	.280-.310	SK28S3-7S	.220-.250
SK26S51-8	.310-.340	SK28S3-8S	.250-.280
SK26S51-9	.340-.370	SK28S3-9S	.280-.310
SK26S51-10	.370-.400	SK28S3-10S	.310-.340
SK26S51-11	.400-.430	SK28S3-11S	.340-.370

SK210-30S (For Wood)

SK210-31S (For Metals)

Outer Panel Hole (To .065)	Drill .257	Drill .257
Outer Panel Hole (Greater than .065)	Drill .281	Drill .281
Support Hole	Drill 13/32 (1)	Drill 13/32
Tap	1/2-13	7/16-20

Receptacle Length .476 Note: Total length with stud engaged = .575

Note (1) Undersized drill favorable for thread locking in wood

Note (2): Assumes SK210 is set flush with support panel surface. All values decrease for the given stud if SK210 receptacle is set below inner panel surface. All values increase if receptacle is protruding.

Skybolt CLoc® 2000 Series Threaded Receptacles

SK211-2S Nut Retained Receptacle - Flange - 303 Stainless



Excellent for any Non-Blind Mounting Application
Non-Adjustable Depth
Use thread locking compound to secure nut

Outer Panel Hole (To .065)	Drill .257
Outer Panel Hole (Greater than .065)	Drill .281
Support Hole	Drill 1/2
Min/Max Recommended Support Panel Thickness 0 to 1/4 Inch	

Protruding Stud	Outer Panel Thickness	Flush Stud	Outer Panel Thickness
SK26S51-2	.010-.030		
SK26S51-3	.030-.060		
SK26S51-4	.060-.090	SK28S3-4S	.010-.030
SK26S51-5	.090-.120	SK28S3-5S	.030-.060
SK26S51-6	.120-.150	SK28S3-6S	.060-.090
SK26S51-7	.150-.180	SK28S3-7S	.090-.120
SK26S51-8	.180-.210	SK28S3-8S	.120-.150
SK26S51-9	.210-.240	SK28S3-9S	.150-.180
SK26S51-10	.240-.270	SK28S3-10S	.180-.210
SK26S51-11	.270-.300	SK28S3-11S	.210-.240

SK211-32A Nut Retained Receptacle - Flange - Aluminum



Excellent for any Non-Blind Mounting Application
Non-Adjustable Depth
Use thread locking compound to secure nut
Developed for NASCAR and Racing Applications

Outer Panel Hole (To .065)	Drill .257
Outer Panel Hole (Greater than .065)	Drill .281
Support Hole	Drill 1/2
Min/Max Recommended Support Panel Thickness 0 to 1/4 Inch	

Protruding Stud	Outer Panel Thickness	Flush Stud	Outer Panel Thickness
SK26S51-2	.010-.030		
SK26S51-3	.030-.060		
SK26S51-4	.060-.090	SK28S3-4S	.010-.030
SK26S51-5	.090-.120	SK28S3-5S	.030-.060
SK26S51-6	.120-.150	SK28S3-6S	.060-.090
SK26S51-7	.150-.180	SK28S3-7S	.090-.120
SK26S51-8	.180-.210	SK28S3-8S	.120-.150
SK26S51-9	.210-.240	SK28S3-9S	.150-.180
SK26S51-10	.240-.270	SK28S3-10S	.180-.210
SK26S51-11	.270-.300	SK28S3-11S	.210-.240